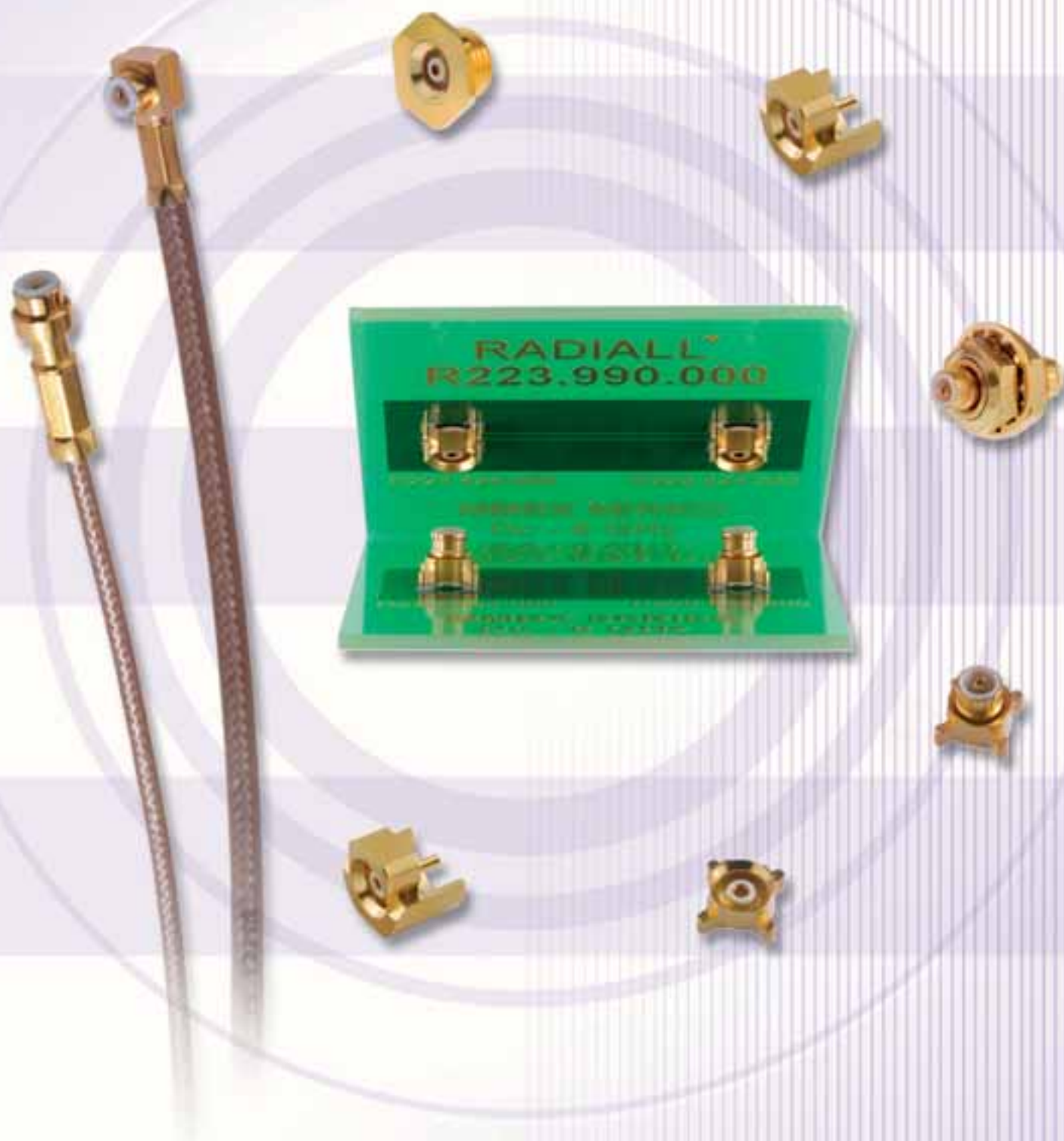


MICROMINIATURE COAXIAL CONNECTORS

MMBX series



RADIALl 
The next connexion

COMPANY Profile

Founded in 1952 in France, Radiall started as a family owned company making coaxial plugs. Today, Radiall is an international and global manufacturer of interconnect components including **RF coaxial connectors and cable assemblies, antennas, fiber optic components, microwave components, and multipin connectors** for the Automotive, Civil Aviation, Defense, Industrial, Medical, Space and Telecommunications.



QSE (Quality Safety Environment) POLICY

Radiall maintains a quality management system conforming to international standards, including for environmental protection. Our customers' recognition for the quality of our products and the sustainability of our company, demonstrates the efficiency of our quality system.



CERTIFICATIONS

Certified ISO 9001 since 1994, Radiall has a pro-active policy in terms of conforming to international standards. Today, all Radiall sites are certified to **ISO 9001:2000** and some

dedicated activities are AS9100 or TS 16949. Our process approach gives us the tool for continuous improvement in all our activities.



A major step in our environment policy was the **ISO 14001** certification in 2001 of the Voreppe plant. Radiall complies with European directives such as **RoHS** for hazardous substance restrictions and **EuP** for environmentally friendly designs for energy-using products.

Some Radiall product lines are on **MIL, ESA/SCC** Qualified Product Lists.

Radiall is consequently proud to be recognized by leading industrial customers for the quality of its service and products.



A WORLDWIDE ENGINEERING & MANUFACTURING CAPABILITY

With expertise centers and manufacturing locations in 3 continents. Radiall offers its customers, through 12 industrial sites, the proximity they need to obtain the best quality of service and delivery performance. Our facilities feature state of the art equipment for the many technologies involved in the design, manufacturing and assembly of interconnect products. Manufacturing plants based in **China, India, Tunisia** and **Mexico** give the opportunity to offer Radiall quality at competitive prices.

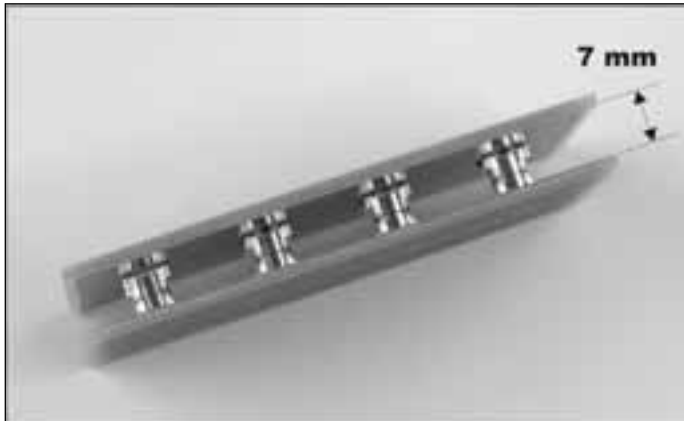
Technical information and sales contacts are available on: www.radiall.com



	PAGE
Introduction.....	4-5
General.....	6
Interface	7
Characteristics.....	8
Plugs	9
Plugs and receptacles	10
PCB receptacles.....	11
Receptacles and adapters.....	12
Adapters	13
Panel drilling and receptacles packaging	14
Tooling.....	15
Assembly instructions	16-21



The new **MMBX™** connector series is particularly suitable for board to board connection in second and third generation telecommunication systems (GSM, PCS, WCDMA, UMTS...). **MMBX™** connectors allow a quick connection in a minimum space requirement. Frequency range is DC to 12.4 GHz. SMT connectors are totally compatible with pick and place machines.



- **Space saving**

Its small space requirement is a main advantage for applications such as board to board connections as the height is only 7 mm.

- **Misalignment tolerance**

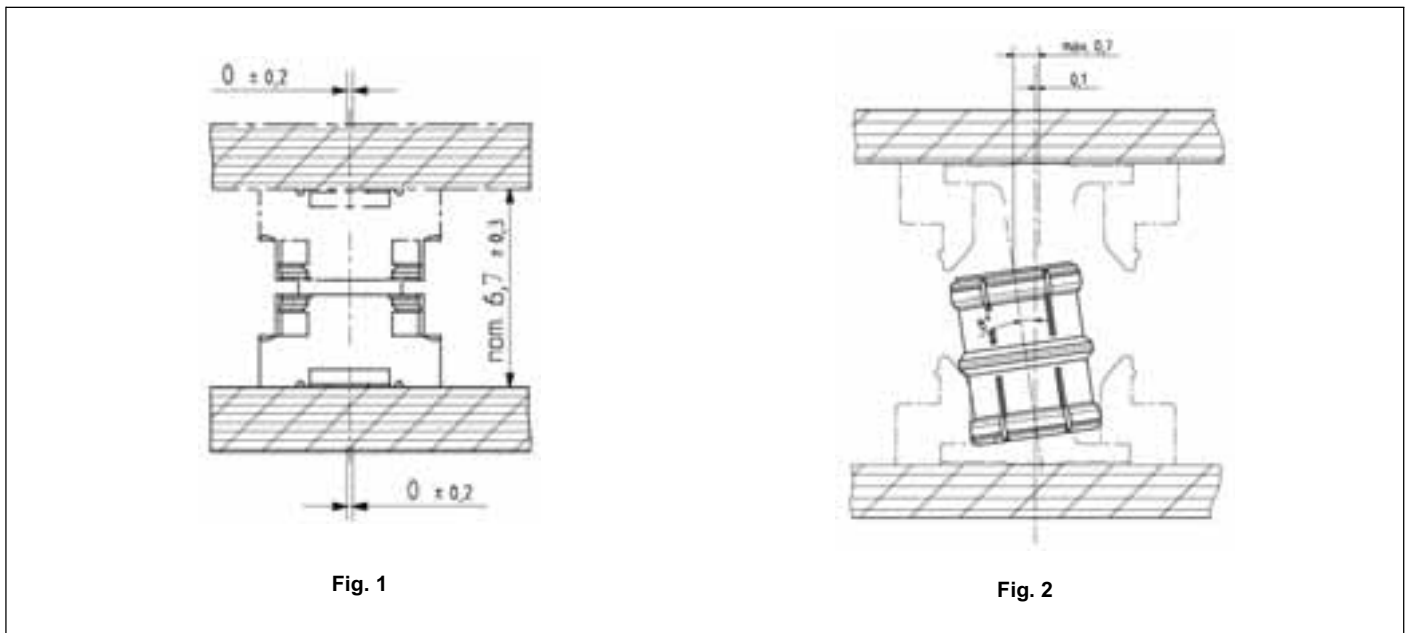


Fig. 1: Moreover, these connectors allow axial misalignment of 0.6 mm with a nominal value of 6.7 mm and radial misalignment of 0.4 mm easing connectors assembly.

The use of an in-series adapter permits these misalignments.

Fig. 2: The maximum tilt of the in-series adapter is 8° which is equivalent to 0.7 mm max between the center line of the in-series adapter and the center line of the PCB receptacle.

In this case, the allowed radial misalignment between the two center lines of connectors is 0.1 mm and the chamfer still guarantee the connection.

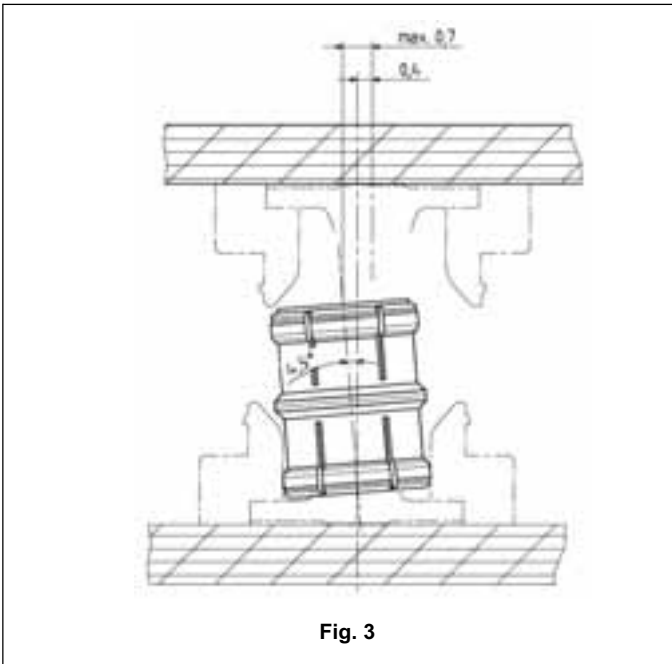


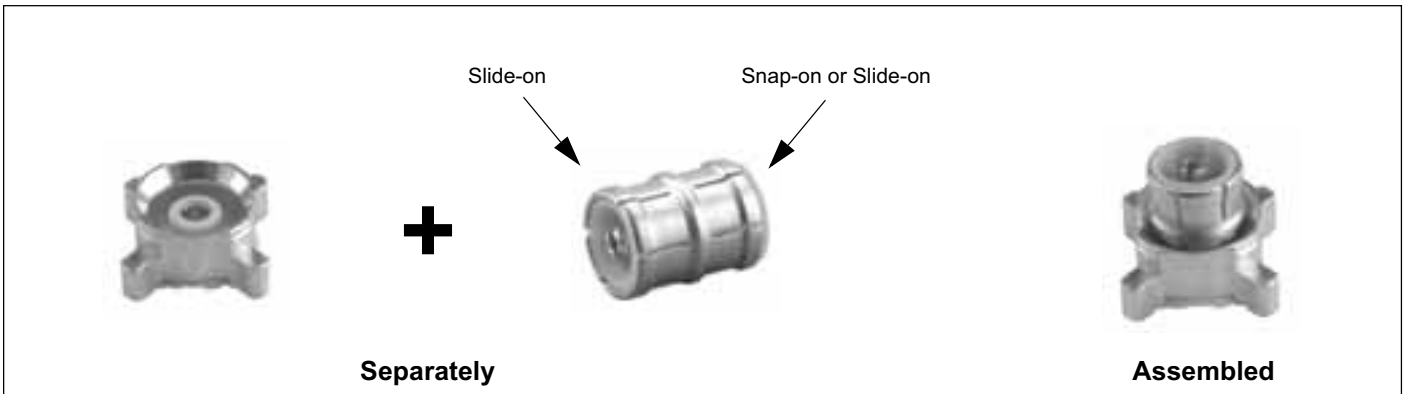
Fig. 3

Fig. 3: When radial misalignment is at its maximum (**0.4 mm**), the allowed tilt is $\leq 4.5^\circ$.

The distance between the center line of the in-series adapter and the center line of the PCB receptacle is 0.7 mm max.

• Series Range

Receptacles and in-series adapters can be either sold separately or with the in-series adapter already inserted in the receptacle. In this case, assembly time will be reduced and you will be sure that the in-series adapter is properly inserted, as it has to be assembled perpendicularly to the receptacle.



Retention between receptacle and in-series adapter is ensured by the design of the adapter.

- Slide-on/Snap-on: for board to board application, all in-series adapters remain on the same side during disconnection.
- Slide-on/Slide-on

In addition of PCB connectors and in-series adapters, Radiall offers you a wide range of products like straight plugs, right angle plugs and between-series adapters.



50 Ω	DC - 12.4 GHz
-------------	---------------

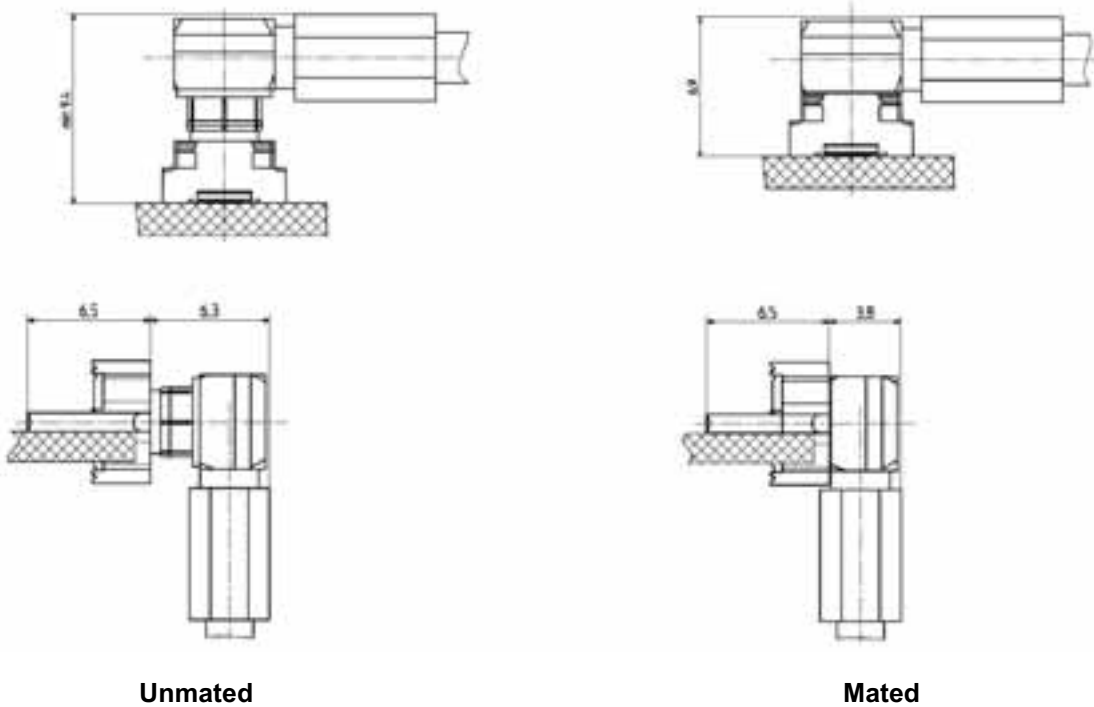
GENERAL

- Snap-on mating
- Microminiature coaxial connectors
- Robust
- Surface mount receptacles
- Fully compatible with automated pick and place machines

APPLICATIONS

- Board to board applications
- Base station
- High density packaging

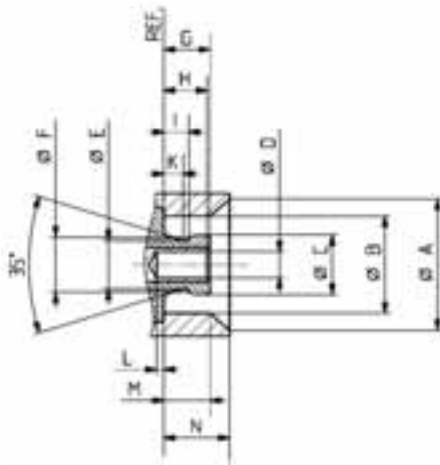
PROFILE



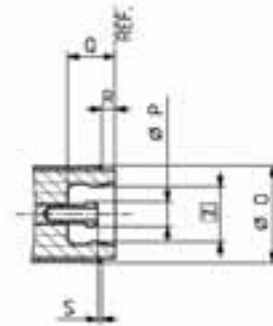


PCB connectors

PLUG



JACK

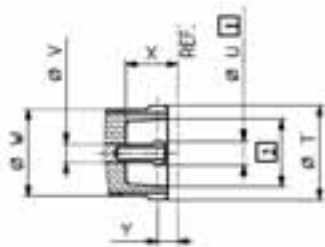


LETTER	mm		inch	
	min.	max.	min.	max.
A	5.00 nom.	5.00 nom.	.197 nom.	.197 nom.
B	3.68	3.71	.145	.146
C	2.25	2.30	.088	.090
D	0.98	1.01	.038	.040
E	1.85 nom.	1.85 nom.	.073 nom.	.073 nom.
F	2.10 nom.	2.10 nom.	.083 nom.	.083 nom.
G		1.80		.071
H	1.55	1.75	.061	.069
I	0.90		.035	

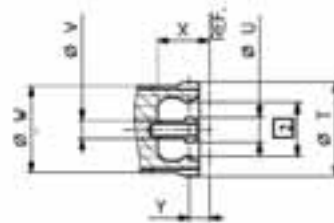
LETTER	mm		inch	
	min.	max.	min.	max.
K	0.75 nom.	0.75 nom.	.029 nom.	.029 nom.
L	0		0	
M	1.45		.057	
N	2.50 nom.	2.50 nom.	.098 nom.	.098 nom.
O	3.70 nom.	3.70 nom.	.146 nom.	.146 nom.
P	0.95 nom.	0.95 nom.	.037 nom.	.037 nom.
Q	1.85 nom.	1.85 nom.	.073 nom.	.073 nom.
R	0.50 nom.	0.50 nom.	.020 nom.	.020 nom.
S	0.10 nom.	0.10 nom.	.004 nom.	.004 nom.

In-series adapters

Slide-on



Snap-on



LETTER	mm	inch
T	3.70 nom.	.146 nom.
U	0.95 nom.	.037 nom.
V	0.70 nom.	.027 nom.

LETTER	mm	inch
W	3.65 nom.	.144 nom.
X	2.05 nom.	.080 nom.
Z	0.80 nom.	.031 nom.

- 1 Slotted and flared to meet electrical and mechanical requirements
- 2 Dimension to meet electrical and mechanical requirements



TEST / CHARACTERISTICS	CECC 22000	VALUES / REMARKS
------------------------	------------	------------------

ELECTRICAL CHARACTERISTICS

Impedance		50 Ω
Frequency range		DC - 12.4 GHz
Typical V.S.W.R.		DC - 1 GHz 1 - 2.5 GHz 2.5 - 6 GHz
<ul style="list-style-type: none"> <i>Straight connectors</i> 	2/50/S 2.6/50/S 2.6/50/D	1.05 1.06 1.10 1.05 1.06 1.10 1.05 1.06 1.10
<ul style="list-style-type: none"> <i>Right angle connectors</i> 	2/50/S 2.6/50/S 2.6/50/D	1.05 1.13 1.22 1.05 1.06 1.17 1.05 1.06 1.13
Insulation resistance		> 1 GΩ
Dielectric withstanding voltage	4.4.5	
<ul style="list-style-type: none"> <i>(sea level)</i> 	2/50 2.6/50	500 Vrms, 50 Hz 750 Vrms, 50 Hz
Contact resistance		
<ul style="list-style-type: none"> <i>Center contact</i> <i>Outer contact</i> 	4.4.2 4.4.3	≤ 5 mΩ ≤ 1 mΩ

MECHANICAL CHARACTERISTICS

Mechanical endurance	4.7.1	100 matings
Engagement and separation force		
<ul style="list-style-type: none"> <i>Engagement</i> <i>Separation</i> 	4.5.4	30 N max 8 - 30 N
Contact captivation	4.5.2	≥ 10 N
Cable retention force		
2/50 2.6/50		58 N 110 N
Vibration	4.6.3 - IEC 68-2-6 Fc	MIL-STD-202, Method 204 D, condition A

ENVIRONMENTAL CHARACTERISTICS

Temperature range		-55, +155°C
Thermal shock	4.6.7 - IEC 68-2-14 Na	MIL-STD-202, Method 107G, condition B1
Moisture resistance	4.6.6 - IEC 68-2-3 Ca	MIL-STD-202, Method 106F
Corrosion	4.6.10 - IEC 68-2-11 Ka	MIL-STD-202, Method 101, condition B
Vibration	4.6.3 - IEC 68-2-6 Fc	MIL-STD-202, Method 204D, condition A

MATERIALS

Center & outer contacts		Beryllium copper
Bodies		Brass
Ferrules		Copper
Insulators		PTFE

PLATINGS

Center & outer contacts		Gold / NPGR*
Bodies		NPGR*
Ferrules		NPGR*

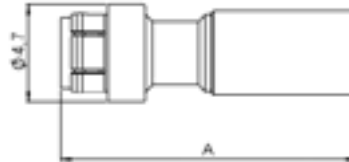
* NPGR: Nickel Phosphorous Gold Radiall

Standard packaging = 100 pieces. For unit packaging add «W» after the P/N

All dimensions are given in mm

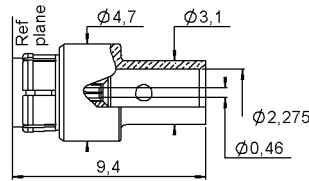


STRAIGHT PLUGS CRIMP TYPE FOR FLEXIBLE CABLES (male center contact)



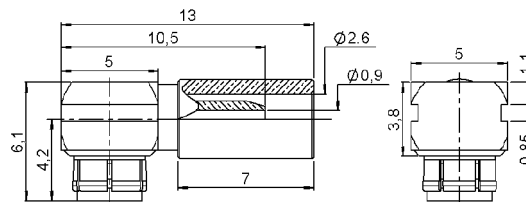
Cable group	Part Number	A	Captive center contact	Assembly instructions
2 / 50 / S	R223 081 000	14.3	yes	M01
2.6 / 50 / S	R223 082 000	14.5		
2.6 / 50 / D	R223 083 000			

STRAIGHT PLUG SOLDER TYPE FOR SEMI-RIGID CABLES (male center contact)



Cable group	Part Number	Captive center contact	Assembly instructions
.085"	R223 062 000	yes	M02

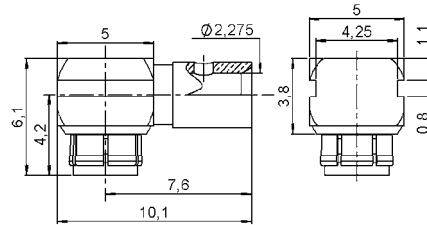
RIGHT ANGLE PLUGS CRIMP TYPE FOR FLEXIBLE CABLES (male center contact)



Cable group	Part Number	Captive center contact	Assembly instructions
2 / 50 / S	R223 181 000	yes	M03
2.6 / 50 / S	R223 182 000		
2.6 / 50 / D	R223 183 000		



RIGHT ANGLE PLUG SOLDER TYPE FOR SEMI-RIGID CABLES (male center contact)



Cable group	Part Number	Captive center contact	Assembly instructions
.085"	R223 162 000	yes	M04

STRAIGHT PCB RECEPTACLE (male center contact)

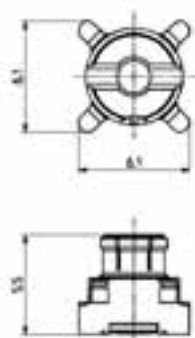


Fig. 1

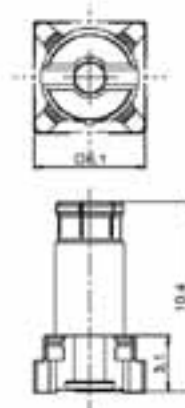


Fig. 2

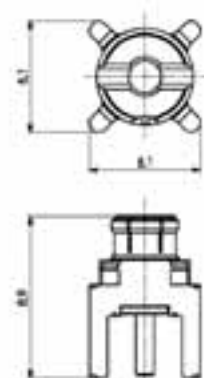


Fig. 3

Part Number	Fig.	Captive center contact	PCB	Assembly instructions	Packaging	Note
R223 434 000	1	yes		M05	bulk 100 pcs	SMT
R223 434 000W	1				unit	
R223 434 020	2				bulk 100 pcs	
R223 434 800	1				tape & reel 750 pcs	
R223 435 000	3		P01		bulk 100 pcs	
R223 435 000W					unit	
R223 435 800					tape & reel 500 pcs	



EDGE CARD PCB RECEPTACLES (female center contact)

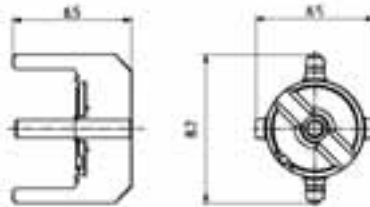


Fig. 1

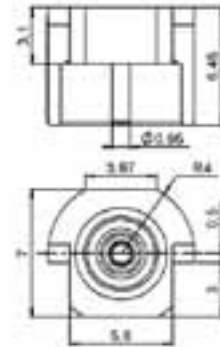


Fig. 2

Part Number	Fig.	Captive center contact	Assembly instructions	Packaging	Note
R223 423 000	1	yes	M05	bulk 100 pcs	SMT edge card
R223 423 010	2				

STRAIGHT PCB RECEPTACLE (female center contact)

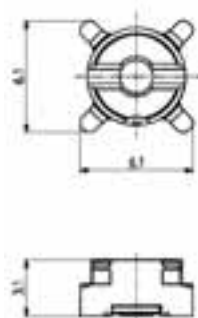


Fig. 1



Fig. 2

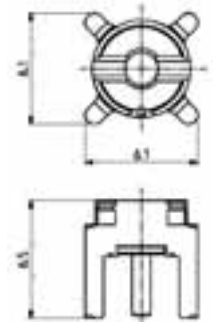
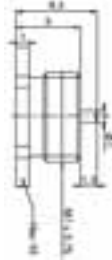


Fig. 3

Part Number	Fig.	Captive center contact	PCB	Assembly instructions	Packaging	Note	
R223 424 000	1	yes		M05	bulk 100 pcs	SMT	
R223 424 000W					unit		
R223 424 200	2				bulk 100 pcs		
R223 424 800	1				tape & reel 750 pcs		
R223 425 000	3				P01		bulk 100 pcs
R223 425 000W							unit
R223 425 800		tape & reel 500 pcs					

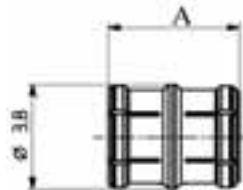


SCREW-ON RECEPTACLE (female center contact)



Part Number	Captive center contact	Panel drilling
R223 555 000	yes	P03

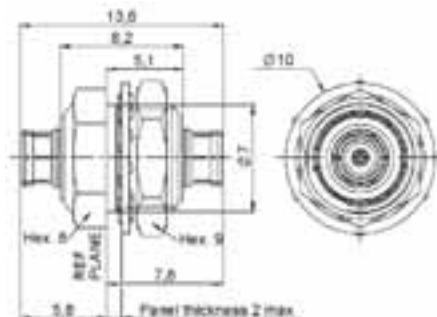
IN SERIES ADAPTERS (male-male center contact)



Part Number	Length A (mm)	Note	Nominal board to board
R223 703 000	4.8	interface: snap - slide	6.7
R223 703 020	9.7	interface: slide - slide	11.7

Other length can be designed upon request: 6.7 mm < board to board height < 20 mm

IN SERIES BULKHEAD ADAPTERS (male-male center contact)



Part Number	Series	PCB
R223 720 020	MMBX male / MMBX male	P02



BETWEEN-SERIES ADAPTERS

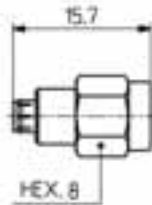


Fig. 1

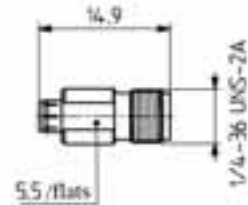


Fig. 2

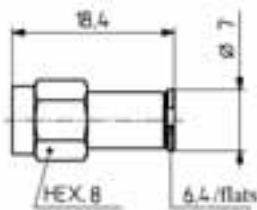


Fig. 3

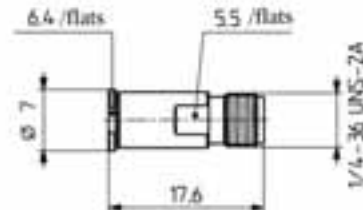


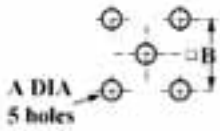
Fig. 4

Part Number	Fig.	Series	Packaging
R191 389 100	1	MMBX male / SMA male	unit
R191 389 200	2	MMBX male / SMA female	
R191 389 300	3	MMBX female / SMA male	
R191 389 400	4	MMBX female / SMA female	



PANEL DRILLING

P01



	mm		inch	
	maxi	mini	maxi	mini
A	1.4	1.2	.055	.047
B	5.16	5	.203	.197

P02



	mm		inch	
	maxi	mini	maxi	mini
A	7.27	7.13	.283	.281

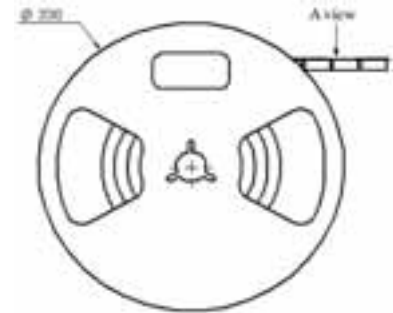
P03



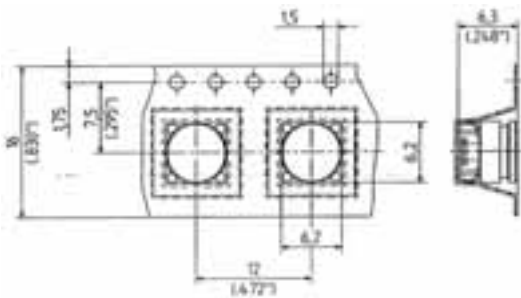
Threading	
ØA	M7 x 0.75

RECEPTACLES PACKAGING

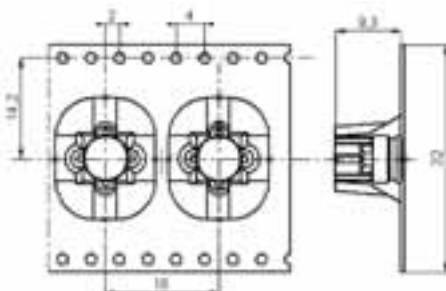
The tape is delivered on reels of 330 mm diameter



A view



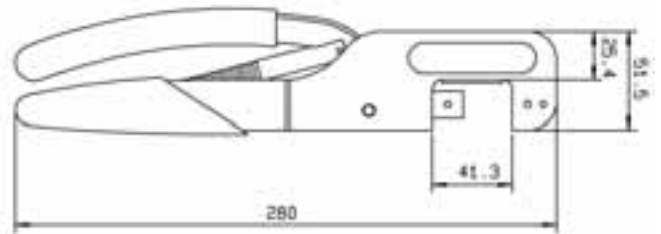
Part Number	Note
R223 424 800 R223 434 800	Including 750 receptacles



Part Number	Note
R223 425 800 R223 435 800	Including 500 receptacles

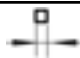
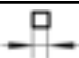
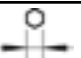


MIL CRIMP TOOL (M22520/5-01) R282 293 000 (dies not included)



DIES



Part number	Cable group			
R282 235 905	2/50		0.54 (.021)	3.25 (.128)
R282 235 906	2.6/50	0.71 (.028)	1.6 (.063)	3.25 (.128)

EXTRACTION TOOL FOR RIGHT ANGLE CONNECTORS AND CAP MOUNTING

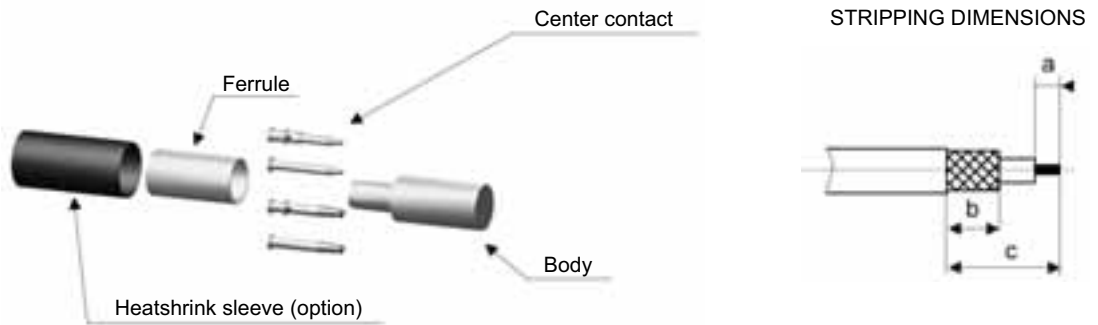


Part number	Flat dimension : inch (mm)
R282 868 000	.276 (7)

- This tool has two functions
- fitting of covers on right angle connectors,
 - extraction of these models after coupling.



M 01



Part Number	Stripping length (mm)			Dies Dim. sq	Ferrule + center contact MIL standard R282 293 000 (M22520/5-01) + dies
	a	b	c		
R223 081 000	1	5	7.5	0.54 - 3.3	R282 235 905
R223 082 000 R223 083 000	1.5	4.5	6.5	0.7 - 3.3	R282 235 906

- 1**
- Slide the heatshrink onto the cable (option).
 - Slide the ferrule onto the cable.
 - Strip the cable.



- 2**
- Slide the center contact on until it bottoms against the cable dielectric.
 - Crimp the center contact with crimping tool (see table).



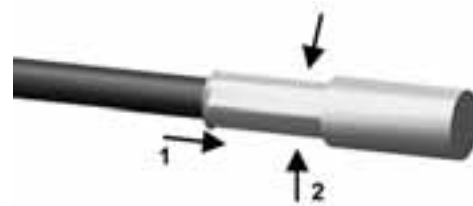
- 3**
- Fan the braid.



- 4**
- Slide the cable into the body until it bottoms against insulator.



- 5**
- Slide the ferrule over the braid.
 - Crimp the ferrule with crimping tool (see table).

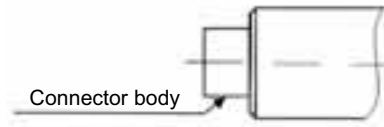


- 6**
- Cut the excess of braid if necessary.
 - Slide the sleeve over the ferrule and heatshrink it in place (option).





M 02



STRIPPING DIMENSIONS



We recommend a thermal preconditioning cable.

Part Number	Stripping length (mm) a	Stripping tool	Pointer gauge	Soldering mounting
R223 062 000	1.5	R282 051 000	R282 062 000	R282 740 000

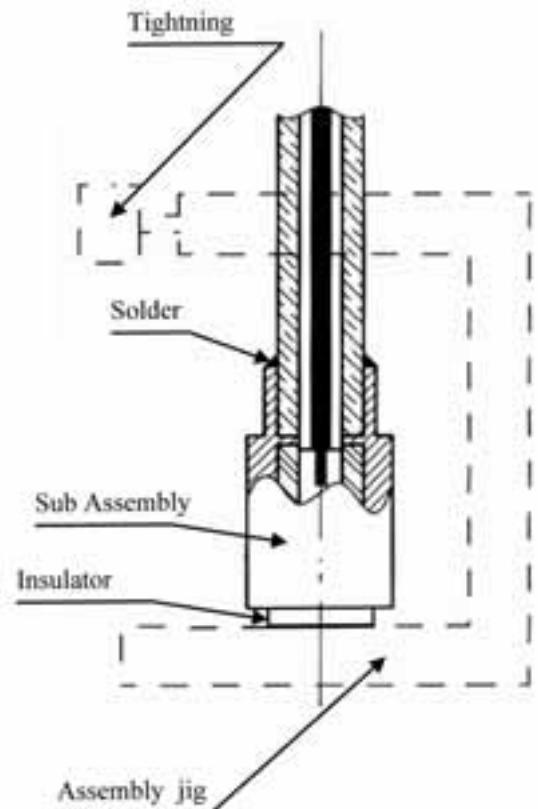
1

- Strip the cable.
- Stripping tool (see table).
- Positioner (see table).
- Trim cable center conductor.
- Trimmer: (see table).

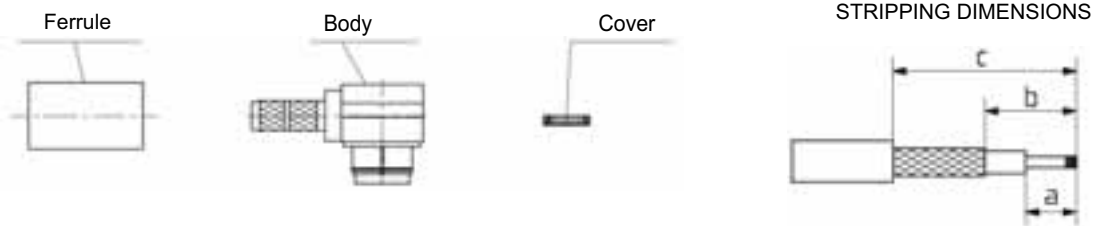


2

- Slide cable into connector body until it contacts the body shoulder.
- Place sub assembly into the assembly jig (see table).
- Insulator bottoms against the assembly jig.
- Solder body onto cable.
- Let the assembly cool down before removing it from the jig.
- Clean the solder area.



M 03



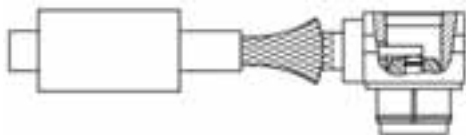
Part Number	Stripping length (mm)			Dies Dim. sq	Ferrule MIL standard R282 293 000 (M22520/5-01) + dies	Assembly tool
	a	b	c			
R223 181 000	1.5	4.5	9	3.3	R282 235 905	R282 868 000
R223 182 000 R223 183 000	2		9.5		R282 235 906	

1

- Slide the ferrule onto the cable.
 - Prepare cable according to diagram.
- Recommandation : to tin cable center contact before assembling.
CAUTION : do not damage braid and inner conductor of cable.

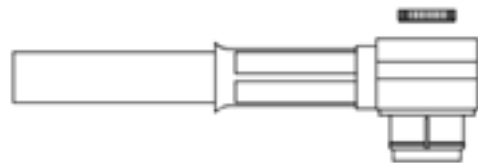
2

- Splay out braid and insert cable in connector body.
- Ensure that braid lies above the crimp neck.



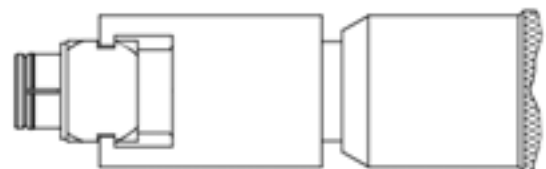
3

- Slide ferrule over braid and crimp as close to connector body as possible.
- Solder inner conductor and place cover on rear opening body.



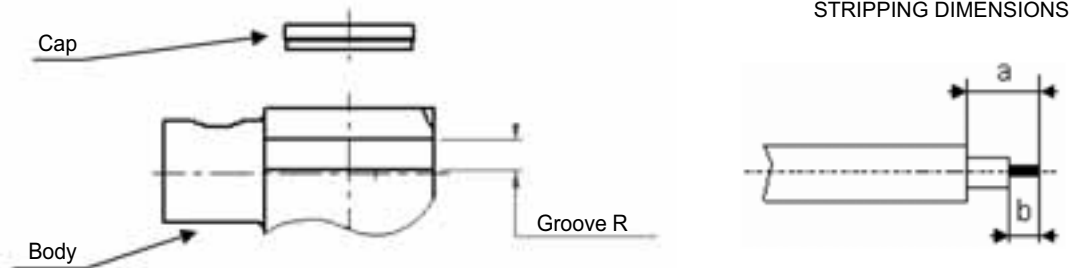
4

- Slide assembly tool in groove.
- Drive cover into rear opening of body by rotating the handle of the assembly-tool.





M 04

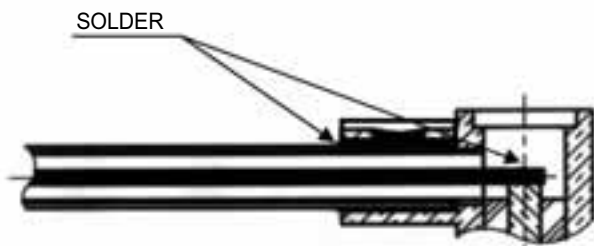


We recommend a thermal preconditioning cable.

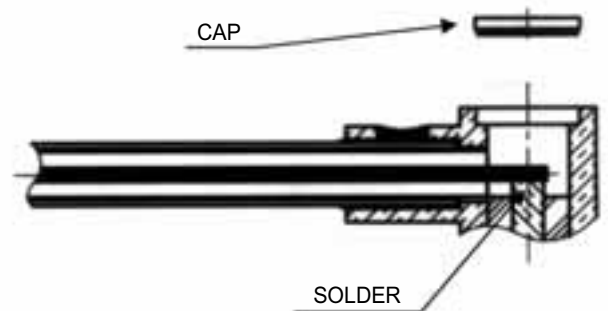
Part Number	Stripping length (mm)		Extraction assembly tool
	a	b	
R223 162 000	2.6	1.4	R282 868 000

- 1**
- Strip the cable.
 - Tin cable inner conductor.

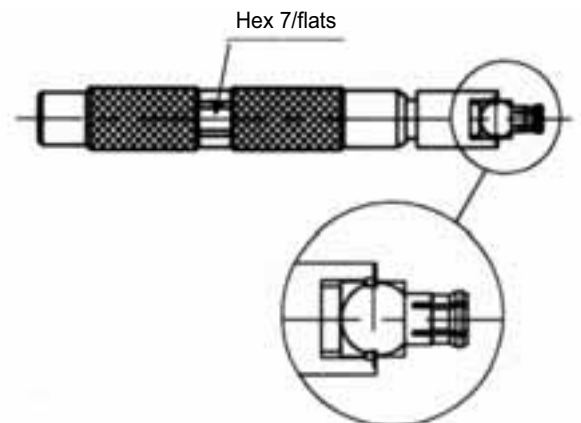
- 2**
- Push the cable into the connector body until contact with it.
 - Solder the cable on the connector body.
 - Solder cable inner conductor into the center contact.
 - Clean soldering area.



- 3**
- Press fit the cap.



- 4**
- Slide mounting tool onto the body grooves.
 - Press fit the cap turning tool handle with adapted wrench 7mm (cap in the same face).



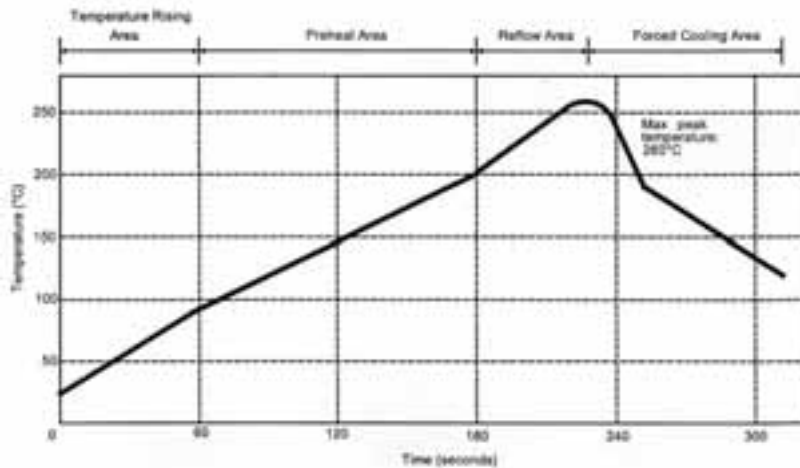


M 05

Part Number		
R223 423 000 R 223 423 010 R223 424 000 R223 424 000 W	R223 424 200 R223 424 800 R223 434 000	R223 434 000W R223 434 020 R223 434 800

- 1 - Deposit solder paste "Sn Ag4 Cu0.5" on mounting zone by screen printing application. We recommend a low residue flux. We advise a thickness of 150 microns (5.85 microinch). Verify that the edges of the zone are clean
- 2 - Placement of the receptacle on the mounting zone with an automatic machine of "pick and place" type. A video camera is recommended for positioning of the component. Adhesive agents must not be used on the receptacle.
- 3 - This process of soldering has been tested with convection oven. Below, please find the typical profile to use.
- 4 - The cleaning of printed circuit boards is not obliged.
- 5 - Verification of solder joints and position of the component by visual inspection.

TEMPERATURE PROFILE

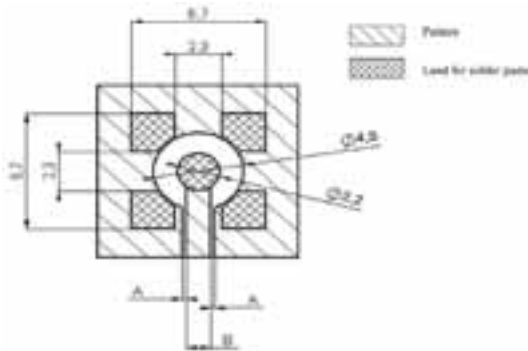


Parameter	Value	Unit
Temperature rising Area	1 - 4	°C/sec
Max Peak Temperature	260	°C
Max dwell time @260°C	10	sec
Min dwell time @235°C	20	sec
Max dwell time @235°C	60	sec
Temperature drop in cooling Area	- 1 to - 4	°C/sec
Max dwell time above 100°C	420	sec



M 05(flg)

Part Number			
R223 424 000 R223 424 000 W	R223 424 200 R223 424 800	R223 434 000 R223 434 000W	R223 434 020 R223 434 800



COPLANAR LINE

Pattern and signal are on the same side.

The material of PCB is epoxy resin (FR4) (Er = 4.6).

The solder resist should be printed except for the land pattern on the PCB.

APPLICATION 75 Ω
WITH B = 0.55 mm

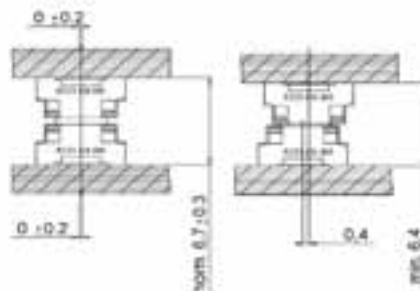
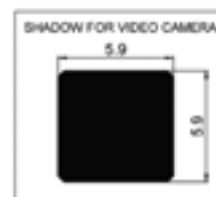
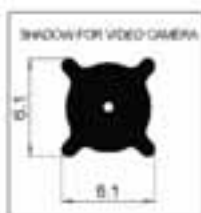
PCB thickness (mm)	Coplanar ligne A (mm)
0.8	0.350
1.0	0.360
1.2	0.365
1.6	0.375

APPLICATION 50 Ω
WITH B = 1.2 mm

PCB thickness (mm)	Coplanar ligne A (mm)
0.8	0.190
1.0	0.200
1.2	0.205
1.6	0.210

Part Number	
R223 424 000 R223 424 000 W R223 424 800	R223 434 000 R223 434 000W R223 434 800

Part Number
R223 424 200





Part numbers	Description	Page
R191 389 100.....	MMBX male / SMA male adapter	13
R191 389 200.....	MMBX male / SMA female adapter	13
R191 389 300.....	MMBX female / SMA male adapter	13
R191 389 400.....	MMBX female / SMA female adapter	13
R223 062 000.....	Straight plug solder type for .085" semi-rigid cable	9
R223 081 000.....	Straight plug crimp type for 2/50/S flexible cable	9
R223 082 000.....	Straight plug crimp type for 2.6/50/S flexible cable	9
R223 083 000.....	Straight plug crimp type for 2.6/50/D flexible cable	9
R223 162 000.....	Right angle plug solder type for .085" semi-rigid cable	10
R223 181 000.....	Right angle plug crimp type for 2/50/S flexible cable	9
R223 182 000.....	Right angle plug crimp type for 2.6/50/S flexible cable	9
R223 183 000.....	Right angle plug crimp type for 2.6/50/D flexible cable	9
R223 423 000.....	Straight SMT edge card receptacle (female center contact) bulk 100 pces	11
R223 423 010.....	Straight SMT edge card receptacle (female center contact) bulk 100 pces	11
R223 424 000.....	Straight SMT receptacle (female center contact) bulk 100 pces	11
R223 424 000W	Straight SMT receptacle (female center contact) packaging unit	11
R223 424 200.....	Straight PCB receptacle (female center contact) bulk 100 pces	11
R223 424 800.....	Straight SMT receptacle (female center contact) reel 750 pces	11
R223 425 000.....	Straight PCB receptacle (female center contact) bulk 100 pces	11
R223 425 000W	Straight PCB receptacle (female center contact) packaging unit	11
R223 425 800.....	Straight PCB receptacle (female center contact) reel 500 pces	11
R223 434 000.....	Straight SMT receptacle (male center contact) bulk 100 pces	10
R223 434 000W	Straight SMT receptacle (male center contact) packaging unit	10
R223 434 020.....	Straight PCB receptacle (male center contact) bulk 100 pces	10
R223 434 800.....	Straight SMT receptacle (male center contact) reel 750 pces	10
R223 435 000.....	Straight SMT receptacle (male center contact) bulk 100 pces	10
R223 435 000W	Straight SMT receptacle (male center contact) packaging unit	10
R223 435 800.....	Straight SMT receptacle (male center contact) reel 500 pces	10
R223 555 000.....	Screw-on receptacle bulk 100 pces	12
R223 703 000.....	In-series adapter (male-male center contact) board to board = 6.7 mm	12
R223 703 020.....	In-series adapter (male-male center contact) board to board = 11.7 mm	12
R223 720 020.....	In-series bulkhead adapter (male-male center contact)	12
R282 235 905.....	Dies for 2/50 flexible cables	15
R282 235 906.....	Dies for 2.6/50 flexible cables	15
R282 293 000.....	MIL crimp tool M22520/5/01	15
R282 868 000.....	Extraction tool for right angle connectors and cap mounting	15

A global range

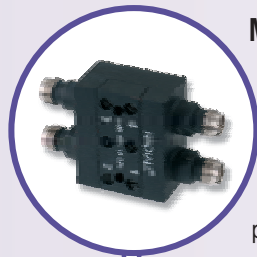
To meet your needs



ANTENNAS

RADIALL develops and produces antennas for frequencies from 27 MHz to 6 GHz.

- Technologies used: wire, patch, printed, wire-plate, PIFA
- Numerous types of antennas: single pole, dipole, network, passive or active (with LNA), adaptable and intelligent, outdoor or integrated.



MICROWAVE COMPONENTS

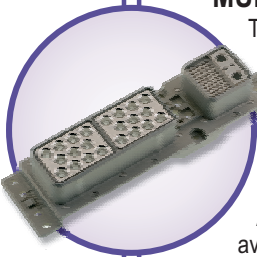
Wide range of coaxial terminations and attenuators using standard interfaces (SMA, QMA, N, QN...) from low (1W) to high power (100W) and new cable load solution, chip terminations up to 18 GHz, hybrid or directional SMT couplers up to connectorized couplers, lightning protectors, detectors, rotary joints, phase shifters, DC Blocks...



AEP CONNECTORS

AEP, a Radiall US subsidiary, design RF connectors for the demanding requirements of military field radio and avionics systems:

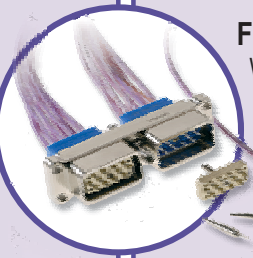
- Coaxial waterproof connectors with a unique system of sealing.
- MIL-PRF-39012 QPL connectors
- SSMB and SSMC superior connectors
- SLB Self Aligning connector system.



MULTIPIN CONNECTORS

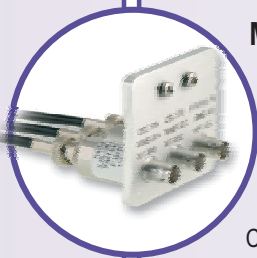
The range includes rack and panel connectors (Arinc 404 & MIL-C-81659B DSX, Arinc 600 NSX & SW280WS1 BPX, EN3682/MIL-C-83527 MPX JN1123 TCX), modular connector (EPX A & B), compatible with a large variety of contacts : signal, power, RF, data bus, fiber optic, quadax and twinax.

A range of wire to wire and wire to board is also available: B & MCSR duty connectors, M, MM, MB, MBC rectangular miniature series, MMC.



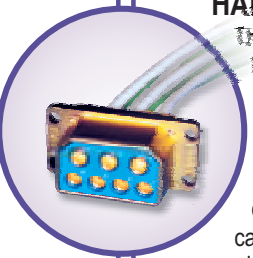
FIBER OPTIC CONNECTORS

Wide range of interconnect solutions, including standard connector interfaces for multimode and singlemode fiber (LC, SC, FC, ST...) as well as connectors and terminations contacts (MIL-T-29504, ARINC 801) for harsh environment applications (aeronautic, military, naval, medical, railway...). Great flexibility for custom design.



MICROWAVE SUB-SYSTEMS

We design Filters, Duplexers, Splitters and Combiners, Switching matrix, interconnection racks and enclosures, Custom assemblies, ... Our expertise includes Microwave passive systems design, Mechanical integration to customer environment, Thermal management, Cabling, wiring, harnessing, ...



HARNESSES

The combination of design and manufacturing of RF and microwave cables as well as multipin connectors (EPX, ARINC 404 and 600) allows Radiall to be a specialist of harnesses for on-board (aeronautic, navy...) or land (railways, removed antenna...) equipment or communications systems. All types of contacts can be used and mixed such as signal, power, RF, quadax, fiber optic...



RF & MICROWAVE CABLE ASSEMBLIES

RG, Eco-Friendly, Handformable, Semi-rigid, SHF Ultra-low loss (General Interconnect, Outdoor, Airframe phase matching large choice of interfaces, Lightweight), ...

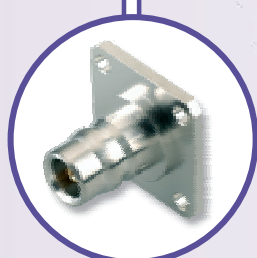


RF & MICROWAVE SWITCHES

Wide range of coaxial switching products for commercial, military and instrumentation applications. Available with a large choice of interfaces (SMA, QMA, N, ...), from DC to 40 GHz.

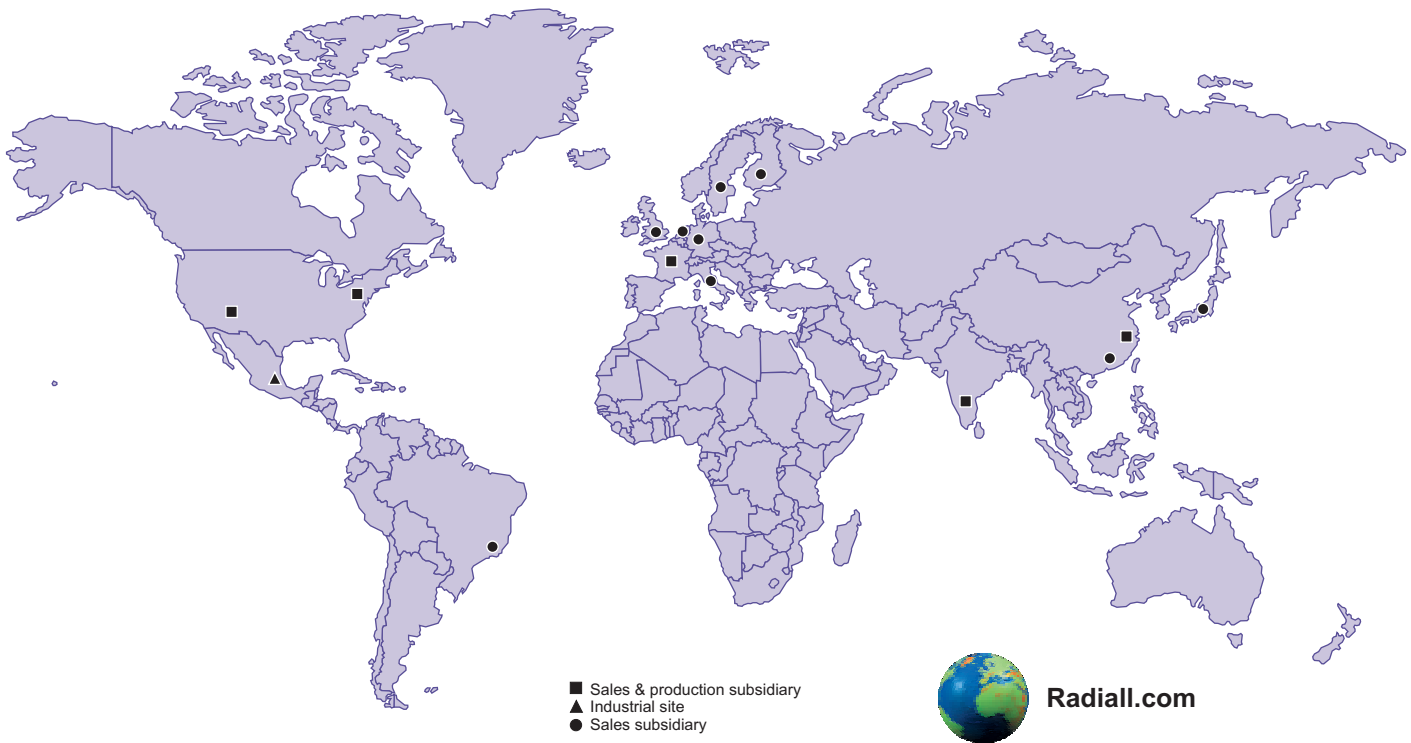
Main products:

- Standard RAMSES series.
- PLATINUM series with high repeatability (0.03dB) on insertion loss during 10 million actuations.
- Subminiature SPnT up to 26.5 GHz.
- SMT high power micro-SPDT.



RF COAXIAL CONNECTORS

The widest range of coaxial connectors in the world from microminiature (UMP) to standard connectors (7/16) covering the frequency range of DC to 65 GHz mixing standardized and custom interfaces (UMP, IMP, MMS, MMT, QMA, QN, MMBX).



RADIALL WORLDWIDE LOCATIONS

EUROPE

France - RADIALL HEADQUARTERS
 101, Rue Ph. Hoffmann - 93116 ROSNY sous BOIS (Paris)
 Tel. : +33 1 49 35 35 35 Fax : +33 1 48 54 63 63
 E-Mail : info@radiall.com

Finland - RADIALL SF
 Pilot Business Park - Lentokatu 2 - FIN-90460 OULUNSALO
 Tel. : +358 852 70 130 Fax : +358 852 70 105
 E-Mail : info@radiall.fi

Germany - RADIALL GmbH
 Carl-Zeiss Str. 10 Postfach 200143 - D63307 RÖDERMARK (Frankfurt)
 Tel. : +49 60 74 91 07 0 Fax : +49 60 74 91 07 70
 E-Mail : infode@radiall.com
 Regional office : Munich

Italy - RADIALL Elettronica SRL
 Via Concordia, 5 - 20090 ASSAGO MILANO
 Tel. : +39 02 48 85 121 Fax : +39 02 48 84 30 18
 E-Mail : radiall@tin.it
 Regional office : Roma

Netherlands - RADIALL BV
 Hogebrinkerweg 15b - 3871 KM HOEVELAKEN
 Tel. : +31 33 253 40 09 Fax : +31 33 253 45 12
 E-Mail : info@radiall.com

Sweden - RADIALL AB
 Sjöängsvägen 2 - SE-192 72 SOLLENTUNA (Stockholm)
 Tel. : +46 844 434 10 Fax : +46 875 449 16
 E-Mail : info@radiall.com

U.K. - RADIALL Ltd
 Ground Floor, 6 The Grand Union Office Park, Packet Boat Lane
 UXBRIDGE Middlesex UB8 2GH (London)
 Tel. : +44 1895 425 000 Fax : +44 1895 425 010
 E-Mail : info@radiall.com

AMERICA

North America
RADIALL
 6825 West Galveston Street Suite 11
 CHANDLER, Arizona 85226, USA
 Tel. : +1 480 682 9400 Fax : +1 480 682 9403
 E-Mail : infousa@radiall.com

RADIALL-AEP
 104 John W. Murphy Drive
 NEW HAVEN, Connecticut 06513
 Tel. : +1 203 776 2813 Fax : +1 203 776 8294
 E-Mail : aepsales@aep.us

Brazil
RADIALL do Brasil
 Largo do Machado, 54 sala 706 - Catete
 22221-020 RIO DE JANEIRO
 Tel. : +55 21 2558 05 76 Fax : +55 21 2245 97 63
 E-Mail : hubertm@radiall.com.br

ASIA

China - SHANGHAI RADIALL Electronic Co., Ltd
 N° 390 Yong He Road 200072 - SHANGHAI
 Tel. : +86 21 66 52 37 88 Fax : +86 21 66 52 11 77
 E-Mail : sales.rsh@radiall.com

Japan - NIHON RADIALL
 Shibuya-ku Ebisu 1-5-2, Kougetsu Bldg 405-TOKYO 150-0013
 Tel. : +81 3 3440 6241 Fax : +81 3 3440 6242
 E-Mail : kunii@radiall.co.jp

HongKong - RADIALL Electronics Ltd
 Elite Industrial Centre, Room 212, 2/F
 N° 883 Cheung Sha Wan Road - KOWLOON HONG KONG
 Tel. : +852 29 59 38 33 Fax : +852 29 59 26 36
 E-Mail : contact@radiall.com.hk

India - RADIALL PROTECTRON pvt Ltd
 25 D, II Phase, Peenya Industrial Area - BANGALORE 560058
 Tel. : +91 80 23 72 09 89 Fax : +91 80 28 39 72 28
 E-Mail : radiall@vsnl.com



REPRESENTED IN

- | | | | |
|-----------|-------------|--------------|----------|
| Africa | Greece | Russia | Thailand |
| Australia | Israël | Singapore | Taiwan |
| Belgium | Malaysia | Spain | Turkey |
| China | Philippines | South Africa | USA |
| Denmark | Poland | South Korea | |
| France | Portugal | Switzerland | |

For the above countries, please contact the local agent or RADIALL at info@radiall.com

D1C223CE - 2007 May Edition



This information is intended as a guide only. To ensure a continuing policy of product improvement, Radiall reserves the right to modify its specifications without prior notification.

Printed in France